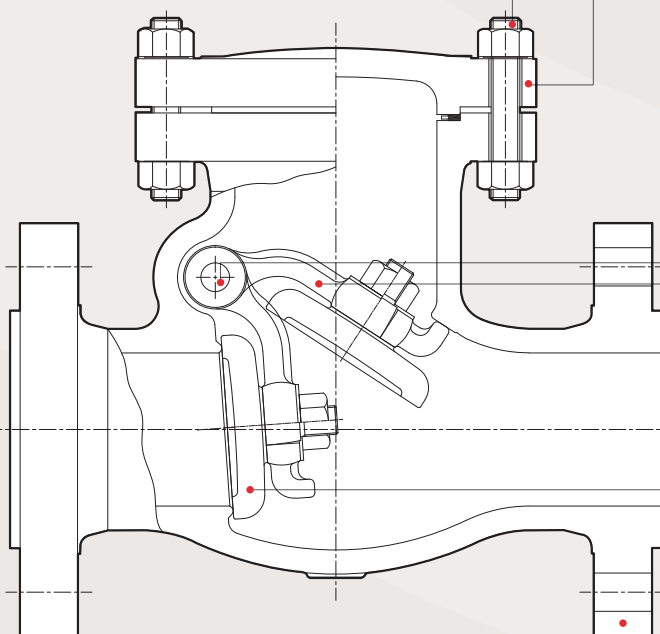


# CAST STAINLESS STEEL

## SWING CHECK VALVES BOLTED COVER



### BOLTING

The cover studs and nuts are manufactured from alloy or stainless steel to the relevant ASTM standard.

### COVER

The cover is in stainless. The sealing surface for the connection to the body are recessed in the 150 and 300 class and ring joint in the higher classes.

### ROD PIN

The rod pin is part of the trim. The hinge pin is retained in the body by one-threaded plugs and sealed by metallic or non-asbestos. The pin can be easily removed for maintenance of the valve.

### ARM

The arm material is identical to the body. Hinge bushing is provided in the larger valves sizes to minimize friction and eliminate seizing.

### DISC

The disc is part of the trim. The backside has a threaded stud for attachment to the hinge with a stainless steel nut and split pin to insure a strong connection. The seating face is ground and lapped for a perfectly tight seal.

### BODY

The body is in stainless steel, carefully designed to keep pressure drops to a minimum. A wide opening on top of the body permits easy inspection and maintenance. The basic dimension, i.e. wall thickness, face to face and flanges comply with the relevant API and ANSI standards. The body-to-cover flange is circular.

Threaded bosses are incorporated to ensure correct alignment of the hinge pin. Bosses may be provided for drain taps or by-pass piping.

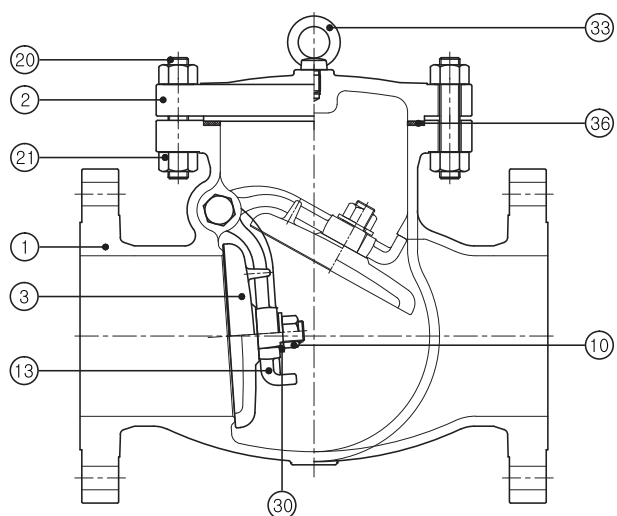
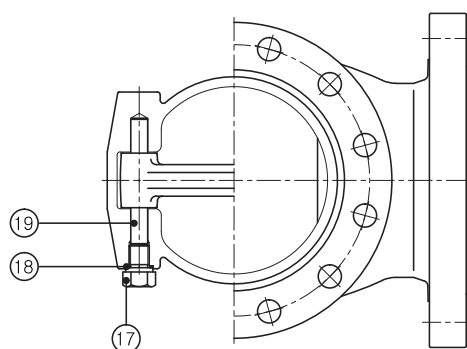
# CAST STEEL

## INDUSTRIAL VALVES CAST STAINLESS STEEL

NO	NAME OF PART	ASTM SPECIFICATION				
		STANDARD	CORROSION SERVICE			
1	BODY	A351-CF8/+STL	A351-CF8M/+STL	A351-CF3/+STL	A351-CF3M/+STL	A351-CN7M/+STL
2	COVER	A351-CF8	A351-CF8M	A351-CF3	A351-CF3M	A351-CN7M
3	DISC	A351-CF8/+STL	A351-CF8M/+STL	A351-CF3/+STL	A351-CF3M/+STL	A351-CN7M/+STL
10	DISC NUT	A193-B8	A193-B8M	A193-B8	A193-B8M	ALLOY 20
13	ARM	A351-CF8	A351-CF8M	A351-CF3	A351-CF3M	A351-CN7M
17	PLUG BOLT	A479-304	A479-316	A479-304L	A479-316L	ALLOY 20
18	PLUG GASKET	A479-304	A479-316	A479-304L	A479-316L	ALLOY 20
19	ROD PIN	A479-304	A479-316	A479-304L	A479-316L	ALLOY 20
20	COVER BOLT	A240-304				
21	COVER NUT	A240-304				
30	PLAIN WASHER	A240-304	A240-316	A240-304L	A240-316L	ALLOY 20

\* Note 1, Gasket material : customer's requirements,

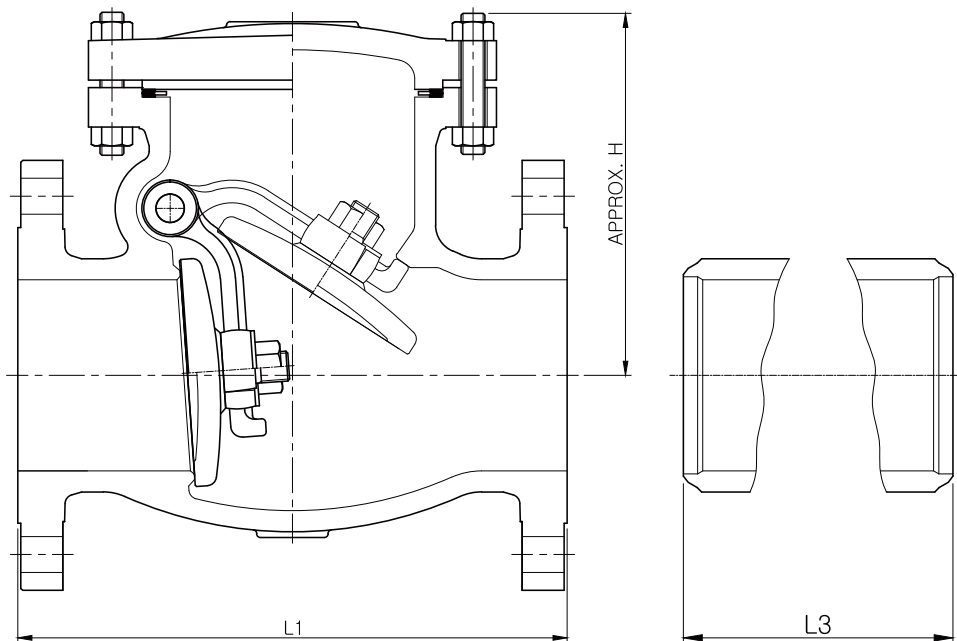
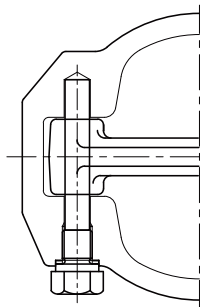
NO	NAME OF PART	ASTM SPECIFICATION
33	EYE BOLT	A193-B8
36	SPIRAL WOUND GASKET	GRAPHITE+304



# CAST STEEL

## INDUSTRIAL VALVES ASME CLASS 150

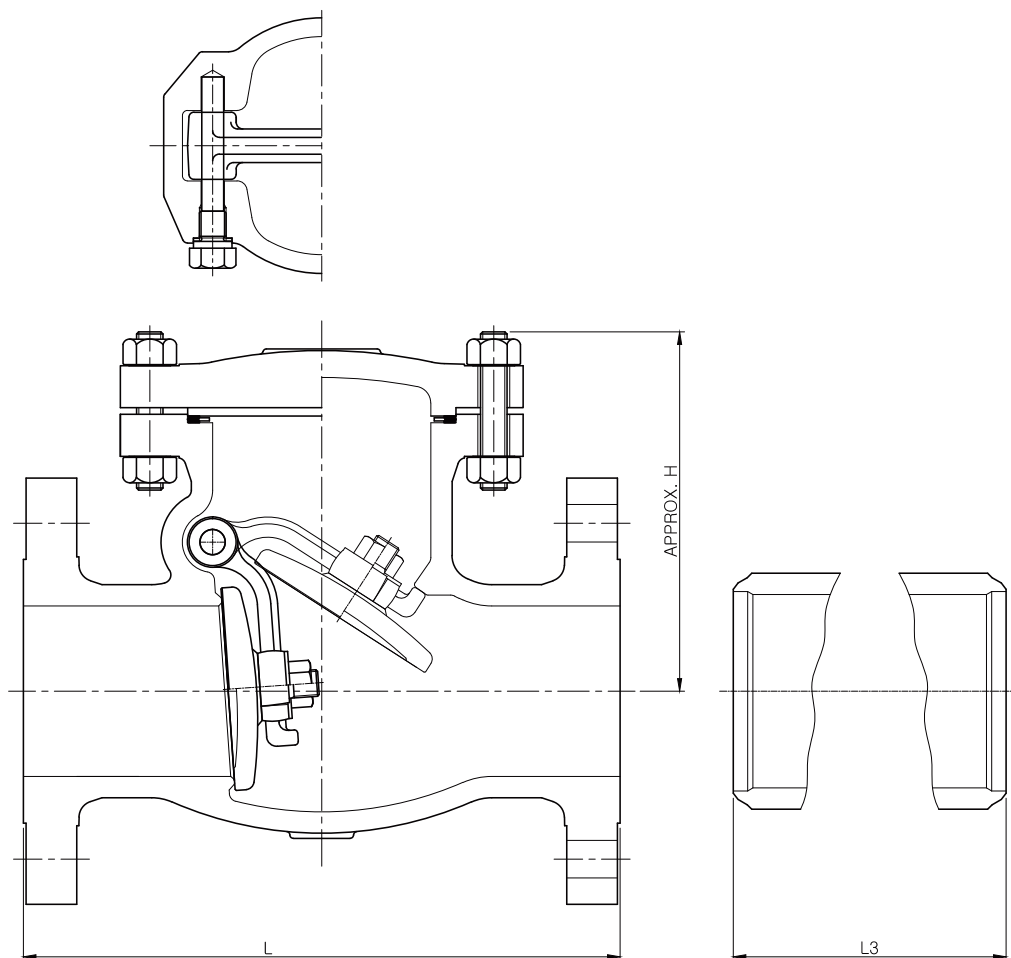
VALVE SIZE	inch	2	2 ½	3	4	5	6	8	10	12	14	16	18	20	24
	mm	50	65	80	100	125	150	200	250	300	350	400	450	500	600
L3	inch	8,0	8,5	9,5	11,5	13,0	14,0	19,5	24,5	27,5	31,0	34,0	38,5	38,5	51,0
	mm	203	216	241	292	330	356	495	622	699	787	864	978	978	1295
H	inch	5,3	6,3	6,5	7,4	8,5	11,2	13,8	15,6	16,5	18,9	20,5	24,0	26,0	35,4
	mm	135	160	165	189	216	285	352	396	420	480	520	610	660	900
WEIGHT	LB	33,1	48,5	59,5	90,4	143,3	176,4	313,1	390,3	639,5	862,2	1016,5	1411,2	1719,9	3285,5
	kg	15	22	27	41	65	80	142	177	290	391	461	641	780	1490



# CAST STEEL

## INDUSTRIAL VALVES ASME CLASS 300

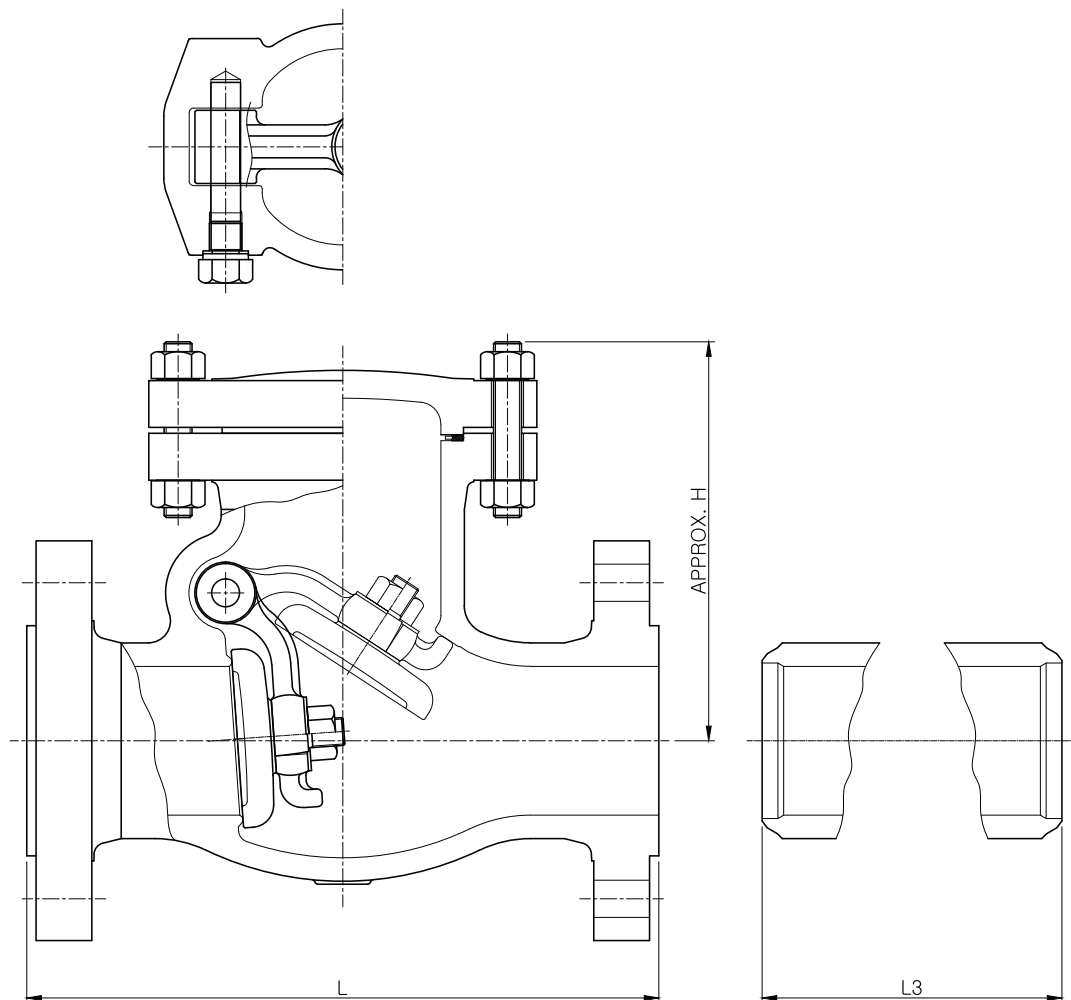
VALVE SIZE	inch	2	2 ½	3	4	5	6	8	10	12	14	16	18	20	24
	mm	50	65	80	100	125	150	200	250	300	350	400	450	500	600
L1 & L3	inch	10,5	11,5	12,5	14,0	15,75	17,5	21,0	24,5	28,0	33,0	34,0	38,5	40,0	53,0
	mm	267	292	318	356	400	444	533	622	711	838	864	978	1016	1346
H	inch	5,8	6,5	7,0	8,4	10,6	12,0	14,8	16,2	18,1	19,7	22,4	24,8	27,6	31,5
	mm	147	165	177	215	270	304	376	413	460	500	570	630	700	800
WEIGHT	LB	41,9	86,2	77,2	119,1	198,5	282,4	463,1	590,9	915	1503,8	1647,1	2756,3	3307,5	4917,2
	kg	19	30	35	54	90	128	210	268	415	682	747	1250	1500	2230



# CAST STEEL

## INDUSTRIAL VALVES ASME CLASS 600

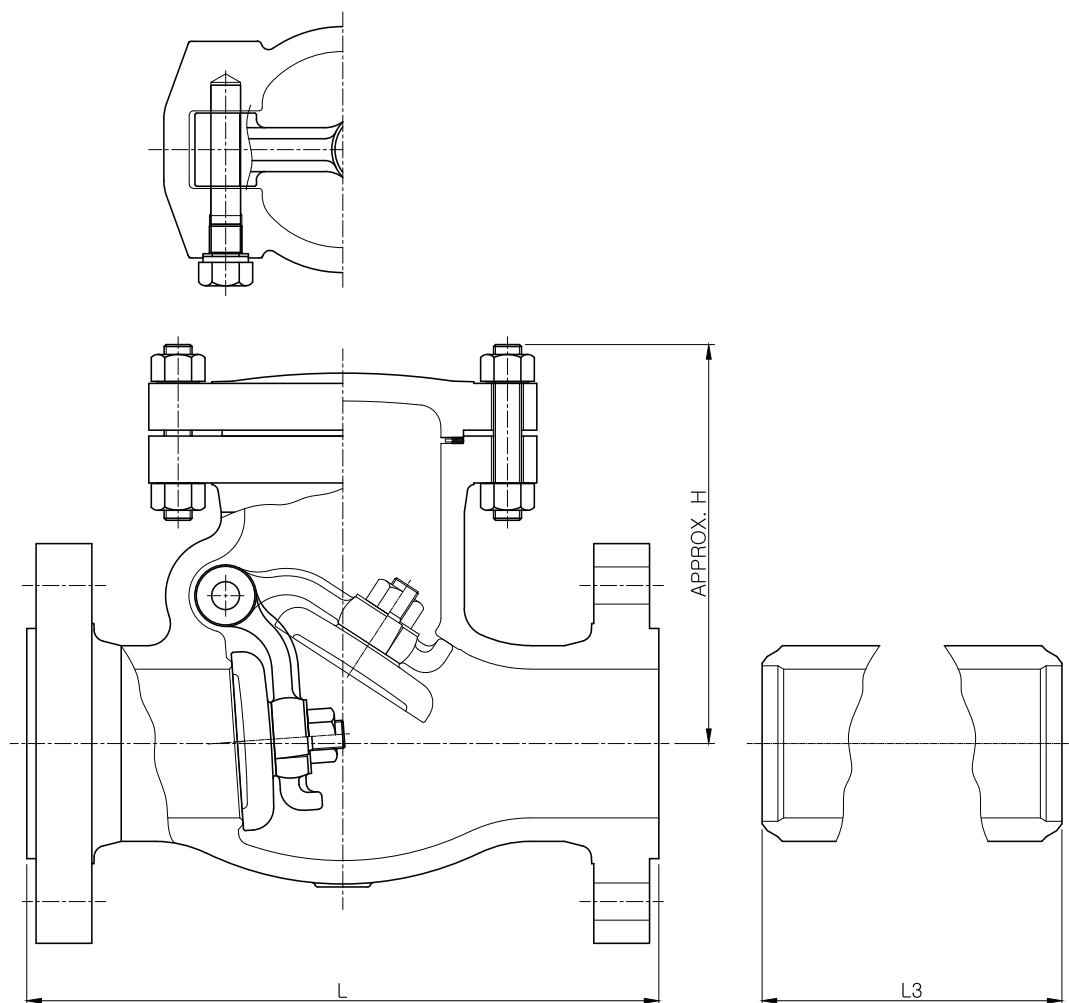
VALVE SIZE	inch	2	2 ½	3	4	5	6	8	10	12	14	16	18	20	24
	mm	50	65	80	100	125	150	200	250	300	350	400	450	500	600
L1 & L3	inch	11,5	13,0	14,0	17,0	20,0	22,0	26,0	31,0	33,0	35,0	39,0	43,0	47,0	55,0
	mm	292	330	356	432	508	559	660	787	838	889	991	1092	1194	1397
H	inch	7,5	8,3	9,6	11,8	13,3	15,7	16,9	20,7	24,2	27,6	32,0	37,8	40,5	45,3
	mm	190	210	235	300	337	400	430	525	615	700	812	960	1029	1202
WEIGHT	LB	77,2	119,1	141,1	229,3	330,8	449,8	793,8	1367,1	1775,0	2306,4	2976,8	4454,1	5269,9	7717,5
	kg	35	54	64	104	150	204	360	620	805	1045	1350	2020	2390	3500



# CAST STEEL

## INDUSTRIAL VALVES ASME CLASS 900

VALVE SIZE	inch	2	2 ½	3	4	5	6	8	10	12	14	16
	mm	50	65	80	100	125	150	200	250	300	350	400
L1 & L3	inch	14,5	16,5	15,0	18,0	22,0	24,0	29,0	33,0	38,0	40,5	44,5
	mm	368	419	381	457	559	610	737	838	965	1029	1130
H	inch	13,1	13,7	12,6	16,7	17,4	18,9	22,2	28,3	30,7	31,8	33,0
	mm	333	349	321	423	441	479	565	721	781	807	838
WEIGHT	LB	154,4	242,6	242,6	471,4	735,6	837,9	1375,9	2535,9	3197,3	3858,8	5336,1
	kg	70	110	110	214	320	380	624	1150	1450	1750	2420



CAST STEEL

INDUSTRIAL VALVES  
ASME CLASS 1500

VALVE SIZE	inch	2	2 ½	3	4	5	6	8	10	12	14
	mm	50	65	80	100	125	150	200	250	300	350
L1 & L3	inch	14,5	16,5	18,5	21,5	26,5	27,75	32,75	39,0	44,5	49,5
	mm	368	419	470	546	673	705	832	991	1130	1257
H	inch	13,1	13,7	15,3	16,5	18,9	23,1	26,8	29,8	39,7	40,8
	mm	333	349	389	419	479	587	680	756	1008	1035
WEIGHT	LB	154,4	242,6	374,9	661,5	1036,4	1532,5	2624,0	4079,3	7342,7	7938
	kg	70	110	170	300	470	695	1190	1850	3330	3600

